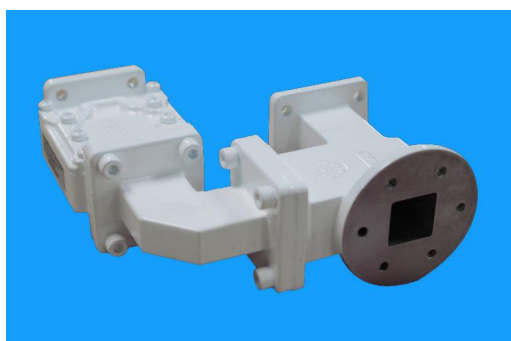


EXTENDED Ku BAND DIPLEXER(Linear POL)

General Description:

Probecom Technologies designs, fabricates, and electrically tests waveguide filters and diplexers from 1-40 GHz for the commercial, military.

A full array of standard filters and diplexers is available for the various commercial and military frequency bands. Many are "off the shelf products". Custom designed filters and diplexers for specific customer applications are available.



Technical Specification

	TWO-PORT	
Operating Frequency, GHz	TX 13.75-14.5	RX 10.7-12.75
Polarization	Linear	Linear
VSWR	1.25:1	1.30:1
Cross POL, dB	35	35
Insertion Loss, dB	≤0.2dB	≤0.3dB
Interface	WR75	WR75
Power Handing, KW	1	
Isolation, Tx/Rx, dB	≥80dB	
Standard and Option		
Pressurization	No or Customized	
Material	Aluminum Casting or Customized	
Exterior	White paint or Customized	